



Hemingford Grey  
SCHOOL

# Get to know Year 3 and 4 - 2023

**T**ogether **E**veryone **A**chieves **M**ore



MISS SYMONS ( Maths and School Curriculum lead)



Mrs Mills job share  
Wednesday  
Thursday Team  
Africa, Friday  
Team Asia



MRS READ (TEAM LEADER)



MR HODSON

# Who's who...Teaching Assistants



Mrs Holt



Mrs Meftah



Mrs Adams



Mrs  
Seamark

# School Improvement Priorities

- To ensure that a rigorous reading programme with daily reading sessions and intensive phonics catch up for those children that are still in need.
- Ensuring there are plentiful opportunities for children to experience the wider curriculum.
- Develop positive mental well-being throughout the school with a whole school involvement to build on equality , diversity, inclusion and belonging.

# Key Characteristics of the Y3/4 Learning Zone

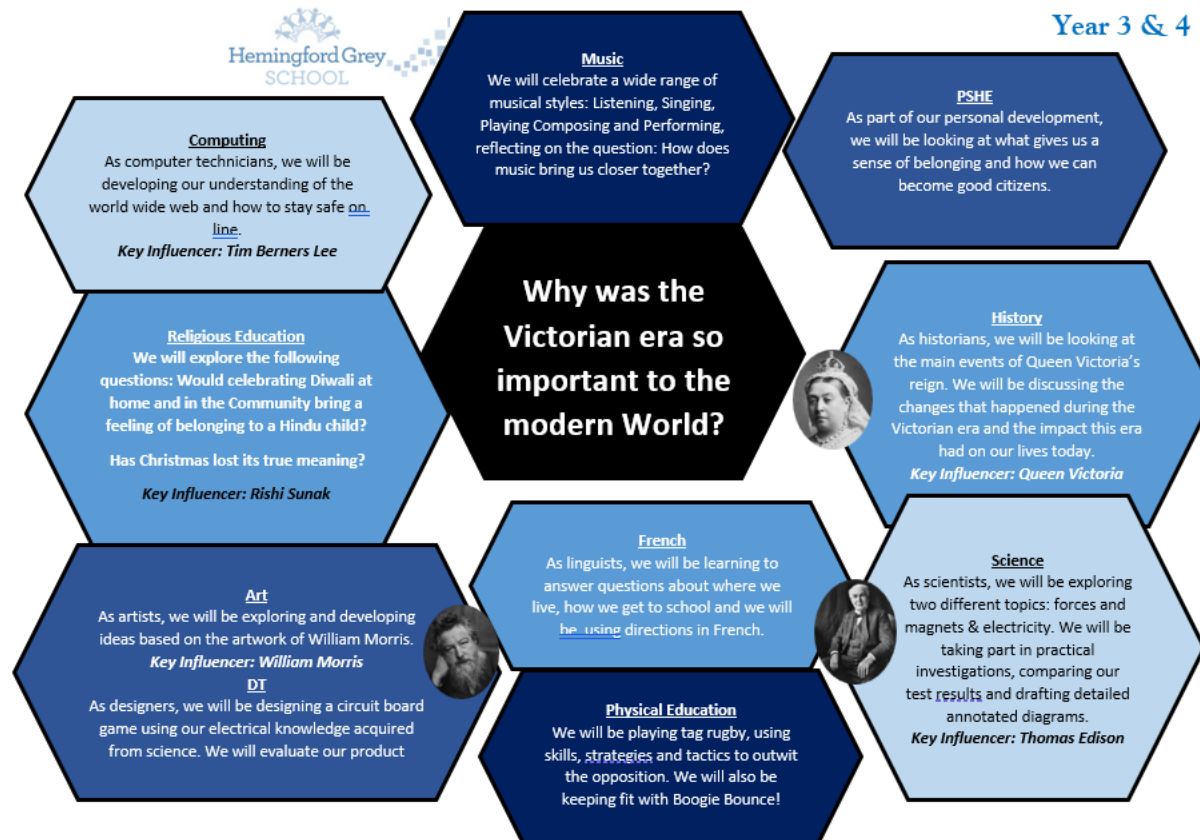
- ▶ The style of independent tasks is developed further from what the children experienced in KS1.
- ▶ Each morning, the children will have
  - One focused maths session (grouped into Year groups) and one independent session
  - One focused English session (mixed ability with class based teacher) and an additional ½ on spelling activities
- Each afternoon, the children will work in their class bases on a rotation of sessions on a particular subject . E.G = Geography
- X 4 times a week, the children will have whole class reading sessions to develop comprehension skills

## Years 3 and 4 – Mrs Read (Harry = ER am's)

8.45	Start 8.50		9.50	10.15 – 10.30	10.30 – 12.00			12.30 – 1.30			
MONDAY	X tables CHECK READING	Writing session (9.00 -9.30 phonics intervention followed by 9.30 – 10.15 Yr. 1 JC with SH)	spelling	BREAK	Maths groups or independent	Maths groups or independent	Reading	HCMNT	Science	Assembly	
TUESDAY	X tables CHECK READING	Writing session (9.00 -9.30 phonics intervention followed by 9.30 – 10.15 Yr. 1 JC with SH)	Assembly	BREAK	Maths groups or independent	Maths groups or independent	Reading	HCMNT	Music VR/ TH	PE VR/ TH	
WEDNESDAY	X tables CHECK READING	Writing session (9.00 -9.30 phonics intervention followed by 9.30 – 10.15 Yr. 1 JC with SH)	Spelling	BREAK	Maths groups or independent	Maths groups or independent	Reading	HCMNT	Foundation subjects		Picture news/PSHE
THURSDAY	X tables CHECK READING	Writing session (9.00 -9.30 phonics intervention followed by 9.30 – 10.15 Yr. 1 JC with SH)	Assembly	BREAK	Maths groups or independent	Maths groups or independent	Reading	HCMNT	Spelling	Foundation subjects	
FRIDAY	X tables CHECK READING	Writing session (9.00 -9.30 phonics intervention followed by 9.30 – 10.15 Yr. 1 JC with SH)	Spelling	BREAK	Maths groups or independent	Maths groups or independent	French	HCMNT	Assembly	Circuit training RE	

A typical week will look like this.

# Theme and learning experiences



# INDEPENDENT LEARNING

- The teachers plan the independent learning to reinforce skills that have been explicitly taught in class.
- Teaching assistants manage independent learning while class teachers teach maths groups.
- Tasks are planned by the teaching staff to support and challenge ALL levels of learning.
- Daily tasks = Quick maths set by maths group teacher  
= A Big Question which is broken down into manageable tasks over a two-week period which ends in a final product with creative emphasis

TAs monitor and support the learning in a structured way that has been planned with teachers.

Some children may be part of a focused learning group, some will be part of a check in system to boost confidence and offer support.



# Spelling and Phonics

Spellings are centred around long and short investigations . The emphasis is that the children will explore different words looking for patterns, sounds and strategies for remembering the spelling.

E.G - ur sound such as burn could be explored using other words such as hurt...curl

Spelling lists are not sent home as these are taught and managed in school.

To support the development of spelling the children will all use **WORDSHARK** within school.

# Times tables

Throughout the year, every child will be working on a particular times table.

We are so fortunate to now be part of **TIMES TABLES ROCK STARS**. It has been proven that by visiting the site x 4 times a week can make a significant difference.

Year 3 are expected to know x2, x 5, x 10 from KS1 and over the year to know x3, x 6 , x 4, x 8

Year 4 are expected to know **ALL TIMES TABLES** by the end of the year. They take part in a national test in June

Please encourage, quick memory exercises as well as spotting patterns.





# READING

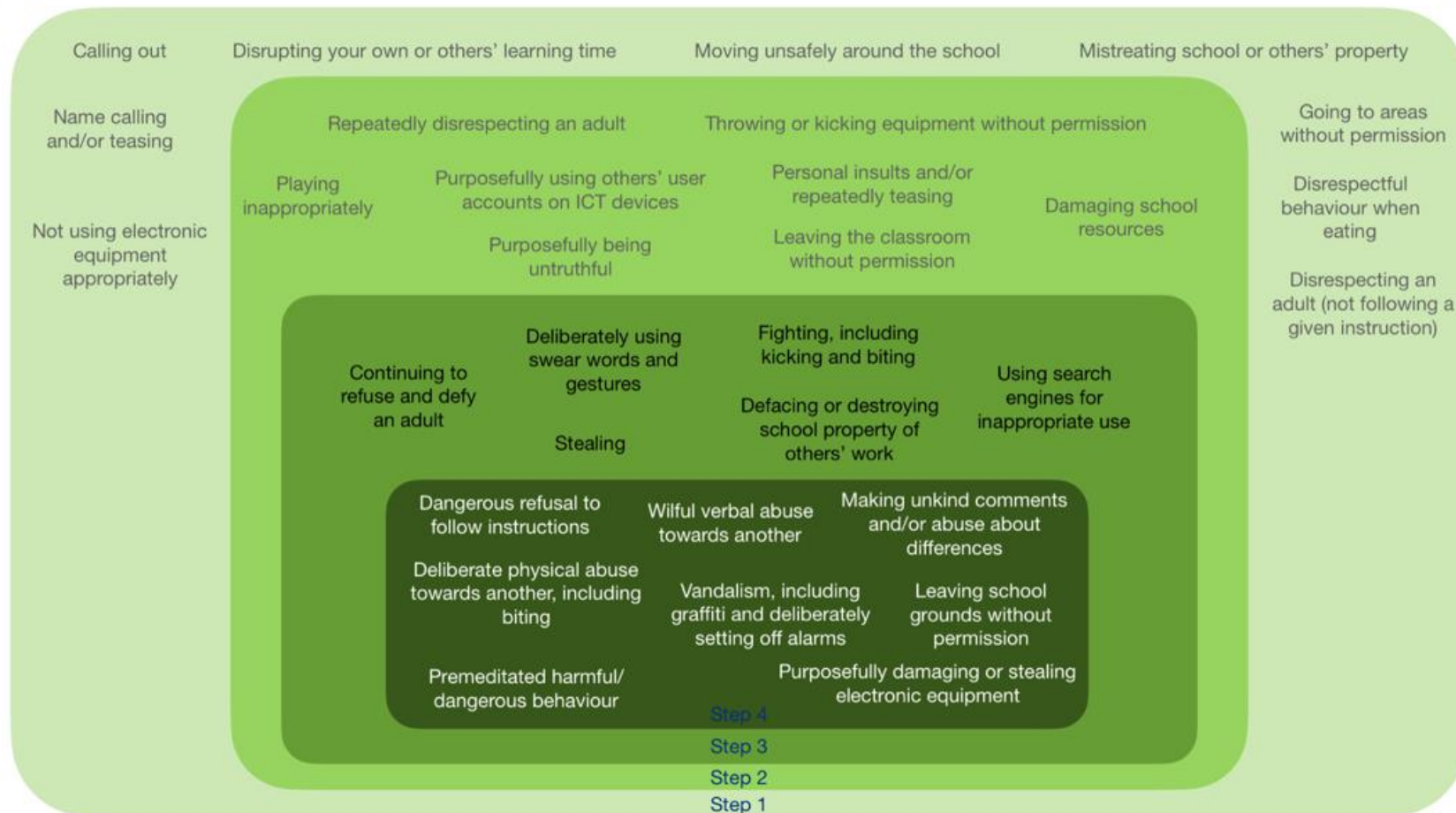
Each child will have their own reading log which will be part of Seesaw this year so it will virtual

- ▶ **EVERY DAY children must have their reading book** .If books are not brought regularly then a meeting will be made to discuss ways to support home/ school reading.
- ▶ Each week the children will make a log of the current book that they are reading, this will form their own personal log of the books they read on our seesaw platform
- ▶ They will continue to be supported with their choice according to interest and guided to the area that supports them, this is determined by termly assessments.
- ▶ All children will have access to non-fiction books and picture books.
- ▶ Children are given time each week to read in school for pleasure
- ▶ Children will be listened to regularly; the frequency depends on the need of the child.

Please listen to your child read at least x 3 times a week.

# BEHAVIOUR

## Hemingford Grey Primary School - Behaviour Steps



We will always inform you if a child reaches Step 2 or beyond so that we can work together to regulate behaviour.

# COMMUNICATION

We use Seesaw on a daily basis with the children.



We send all messages out on seesaw so please ensure that you have added this to your accounts.



Quick changes such as PE swaps or general communication about Year 3 and 4 will be placed on here.

Show seesaw



# Homework

- ▶ Reading daily = 10 - 15 minutes per night. This will greatly enhance your child's progress within KS2
- ▶ Times Table ROCK STARS x 4 a week = The system actually picks up mistakes and will keep on giving that fact until your child has learnt it!
- ▶ Maths tasks will be posted weekly on Seesaw so that you can engage with your child on the aspect of maths they are learning.



# Uniform

- ▶ Please ensure that children are following the school uniform code, which can also be viewed on the website.
- ▶ PE kit should be blue shorts or tracksuit bottoms, a school white or blue top.
- ▶ PE will be on a Tuesday for all our classes

LABEL LABEL LABEL!



# Attendance and Punctuality

- ▶ Doors open at 8.45 am for Year 3 and 4 and finishes at 3.15
- ▶ Thank you for support - children need to be in school so we can make a swift start
- ▶ It is really important that attendance is regular so that learning is consistent.

# Looking forward to a fantastic year ahead...!

WHAT ARE OUR AIMS? We want to build on these principles this year..

CHALLENGE = We want the children to have to think independently!

SUCCESSFUL = We want the children to feel they have achieved things.

DECISIONS = We want the children to have to make choices

REASONING = We want the children to link ideas and explain them.

MAKING MISTAKES = We want the children to understand that learning new things means making mistakes.

DEVELOPING SOCIALLY AND ACCADEMICALLY = we want the children to understand that friendships are things to be nurtured and built upon and if there are stumbling blocks, we are there to guide them.



# Any questions?

**We hope that you as Parents and Carers work with us to swiftly address any gaps children have or help us to understand any social issues so that we can help to resolve these.**

**We are all committed to supporting you and your child and as such we will be contacting parents as soon as there are any behavioural or academic issues that we need parental support with.**

**Please do ensure that you join our seesaw group as we share our learning via this app straight to you.**

**Equally ....we will contact you for wonderful achievements and  
SUCCESSES!**