

HEMINGFORD GREY PRIMARY SCHOOL

TOGETHER EVERYONE ACHIEVES MORE



WELCOME TO KS1



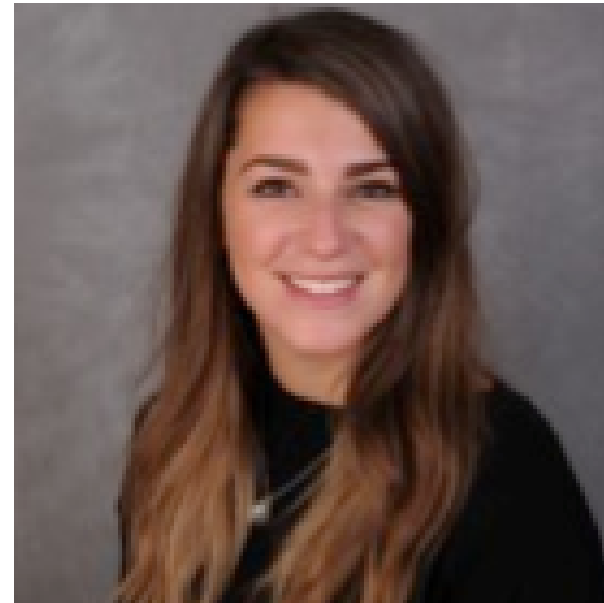
WHO'S WHO - TEACHERS



Miss Perry



Miss Shook



Miss Griffiths



Mrs O'Brien



WHO'S WHO - TA'S



Mrs Taylor



Miss Denniston



Mrs Meftah



Miss Read



Miss Jones



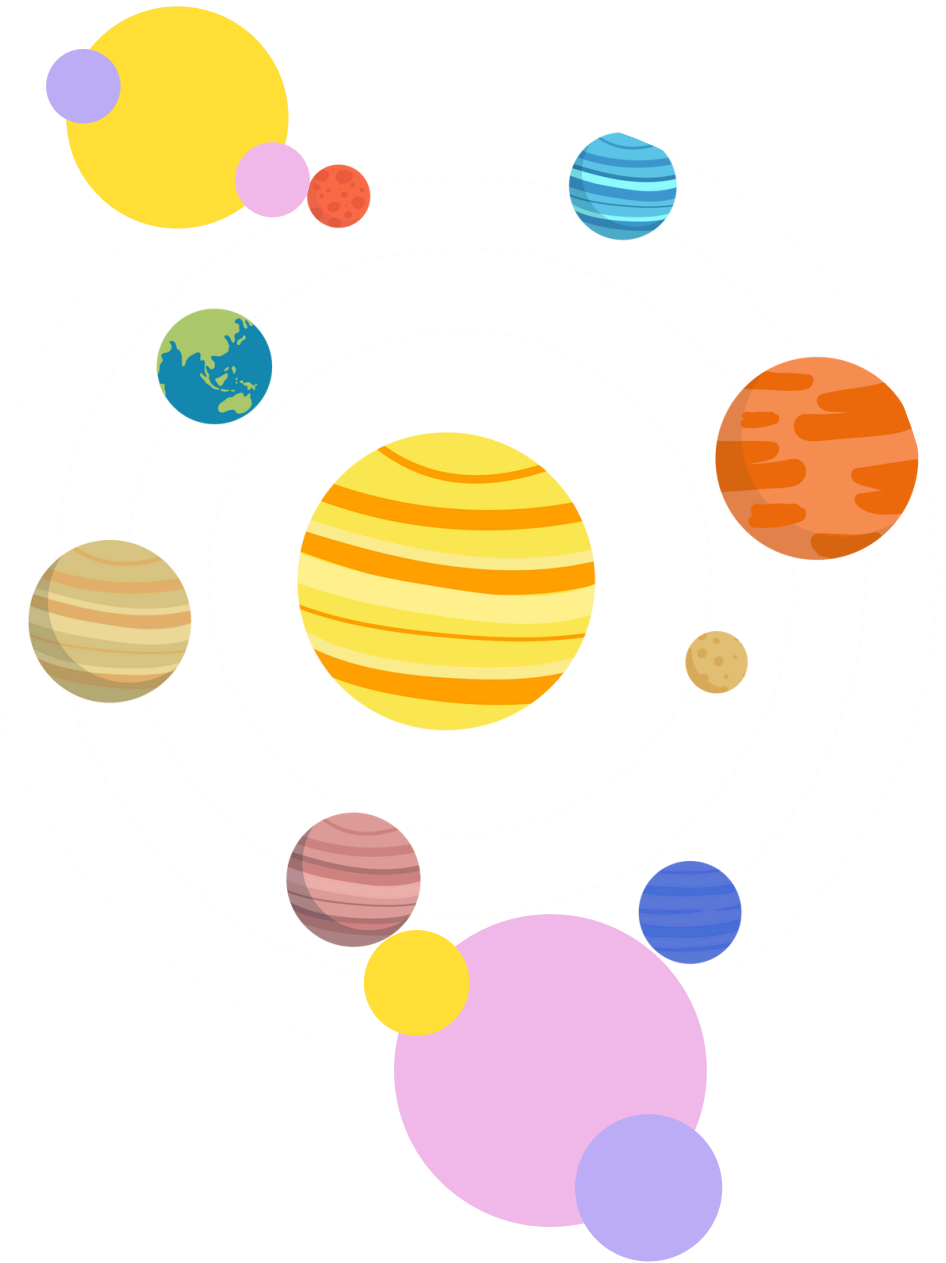
CLASS NAMES

Miss Perry's class will be known as Team Jupiter.

Miss Shook's class will be known as Team Mars.

Miss Griffiths & Mrs O'Brien's class will be known as Team Neptune.

The Learning Zone will be known as 'The Galaxy'.



OUR TIMETABLE

A typical day in KS1 looks like this:

8.45: - 8.55: register and welcome

8.55: phonics

9.25: guided reading

swap into learning groups

9.55: maths

10:45: playtime

11.00: literacy

12.05: number fluency

12.15: lunchtime

1:15 - 1.25: register in classes

swap into learning groups

1.25: topic and provision time

swap into classes

3.05: story

3.15: home time



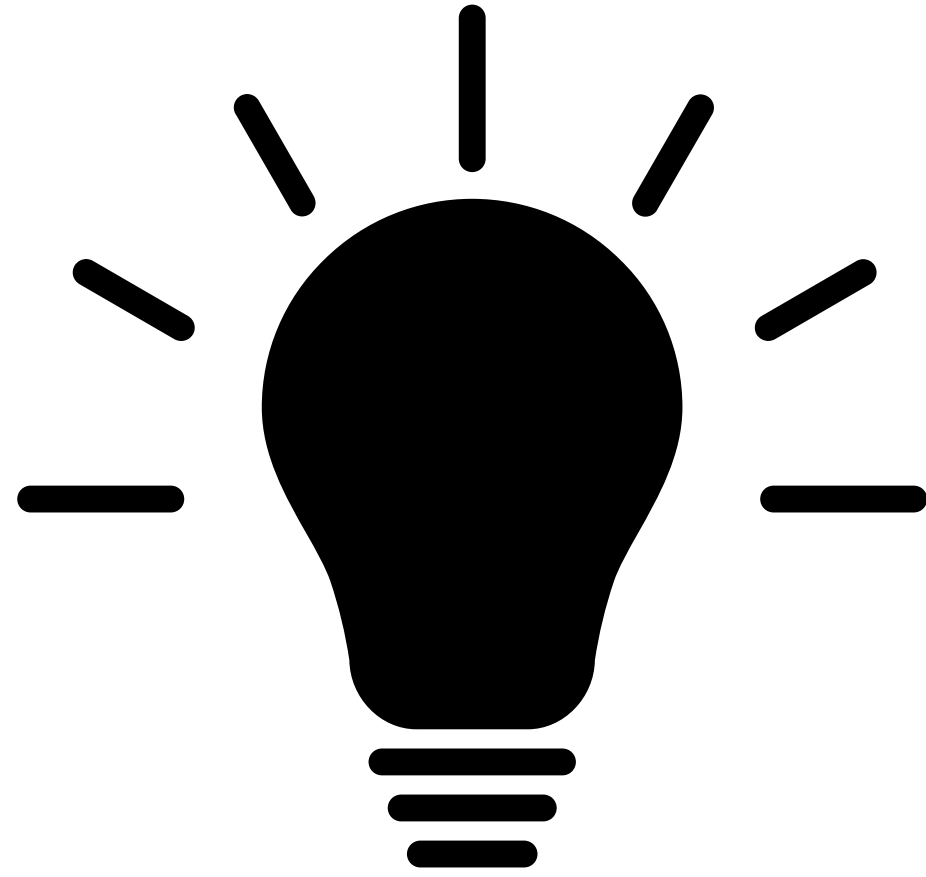


PROVISION

Woven into our day is “provision”. In Reception, children will have had “adventure time” and this was time for them to explore and learn through play. We work the same in KS1, the only difference is that our tasks are more directed to meet the objectives of the KS1 curriculum. We plan and deliver a huge range of learning opportunities through our different areas of the classroom:

**Construction, Small world, Writing, Maths, Story telling,
Book corner, iPads, Malleable**





CHALLENGES

Within provision, we also have a few “must do” activities. These are learning opportunities where children must complete a certain maths or literacy piece of work for the week. This links directly to our teaching, whether its pre learning or the learning for the week.





THE LEARNING ZONE

- Children will be taught their basic skills both within the classroom and in the Learning Zone, which will provide them with hands-on opportunities to apply what they have learnt.
- The Learning Zone will also be used to explore, research and present on termly themes starting with 'Fire Fire- Why was the Great Fire of London such an important historical event?' This will have a particular focus on the key influencer – Samuel Pepy's.

HOW DOES THE LEARNING ZONE WORK?



•The style of independent tasks changes from that which children experience in FS.



While children are still in a free flow Learning Zone, they are more guided in particular activities.



These activities will be led by adults and are matched to the learning objectives from the NC



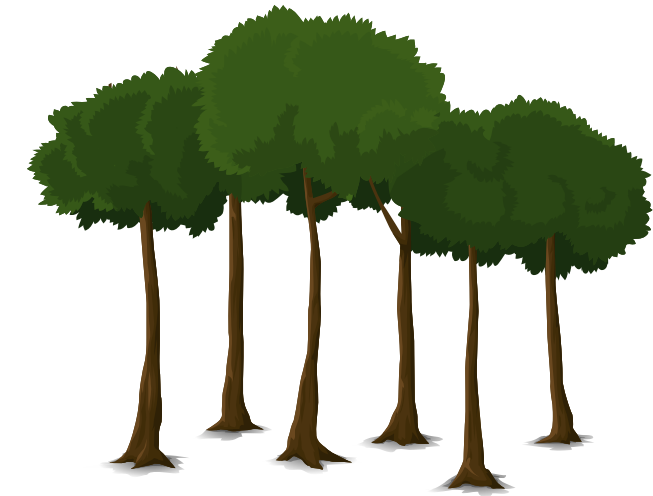
•The children will access all aspects of the learning and be supported appropriately with the increase in expectations.

PE & FOREST SCHOOL



Our PE days are **Tuesday and Thursday**. Children should wear:

- black/blue sweatshirt or hoodie
- white tshirt
- black/blue shorts or joggers.



Our Forest school day is **WEDNESDAY**

Children should wear:

- warm clothing
- wellies
- puddle suit

(things can stay in school if you wish)



LEARNING AT HOME



- Your involvement in supporting your child/children's learning at home makes a huge impact on their learning.
- Little and often
- You can support them in the following ways:
 - times tables practise, reading daily, phonics sounds, opportunities to write for a purpose
- Encourage reading for pleasure, reading a wide range of genres and text types.

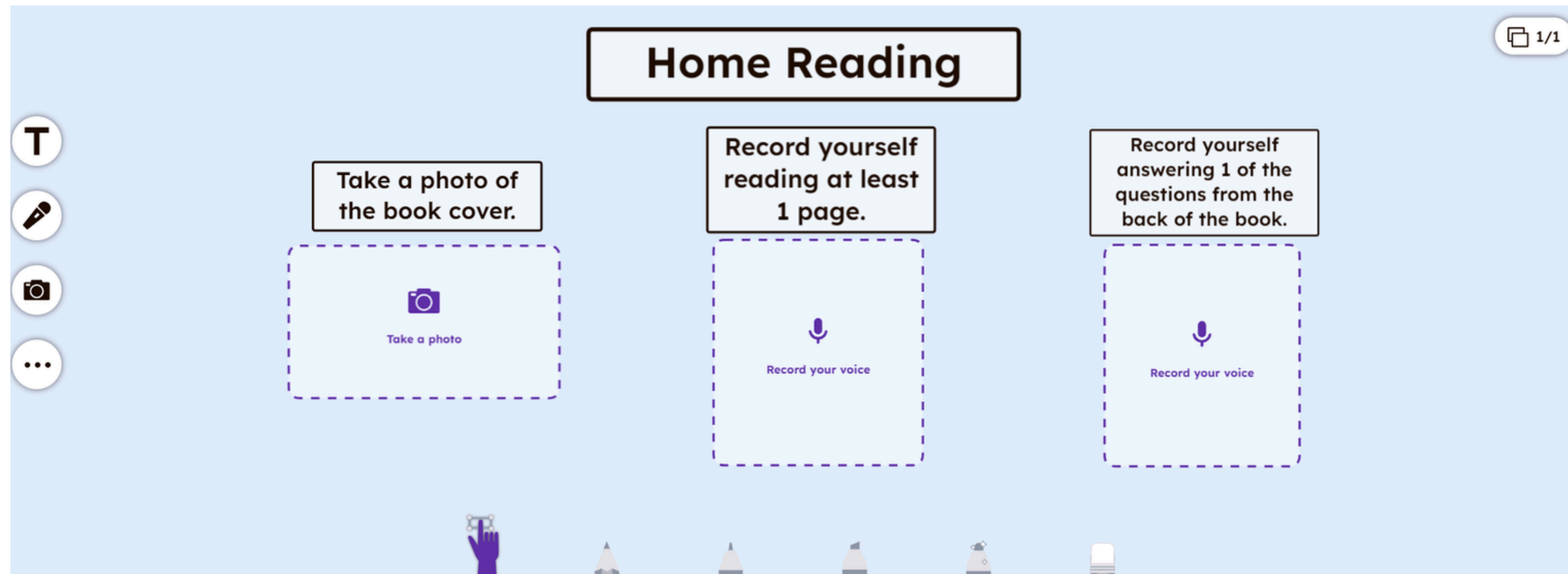
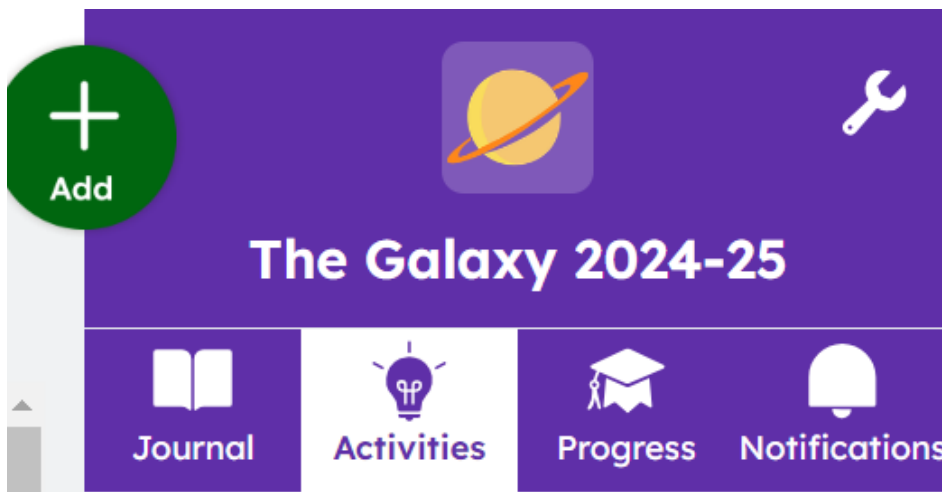
READING



- If your child is receiving Phonics, as of Friday, your child will be starting to bring home a school reading book. This links closely with their Phonics and Guided Reading Teaching from the week. This book will be changed every Friday.
- If your child is receiving SPaG, they will have already received a book on Monday and will change is every Monday.
- Your child will keep the book for a whole week to allow opportunities to develop comprehension and discussion as well as decoding skills. Please use the question cues in the book to support with this.
- Please make use of the book shed which is located in the playground.

MOVING AWAY FROM READING RECORDS

- As mentioned in a Seesaw post, we will no longer be sending home Reading Records. Instead, there will be an activity set to the children via Seesaw.



We ask for the children to record themselves reading 3 times a week. This is in replace of Reading Records. Although we only require a recording 3 times a week, we highly recommend reading daily to support your child's fluency and language comprehension.

**OUR TEAM IS
LOOKING
FORWARD TO
THE YEAR
AHEAD!**





**ANY
QUESTIONS**